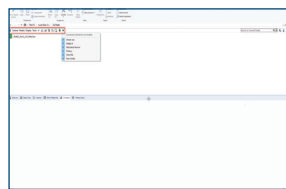


WHAT'S NEW IN SOLIDWORKS® 2021 – DATA MANAGEMENT

SOLIDWORKS PDM

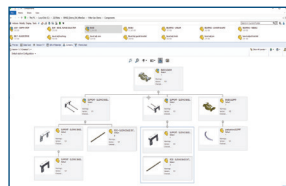


1 File Explorer Enhancements

- Customizable quick access commands
- View Layout changeable from Windows Explorer
- Shortcuts like Ctrl+i to trigger Check In command
- Support for Back and Forward from Windows Explorer Address bar

Benefits

Save significant time when performing common SOLIDWORKS PDM operations. Learn to use quickly and easily when familiar with Windows® Explorer.

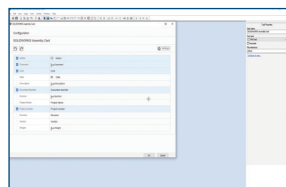


2 Contains and Where Used Treehouse View

- Treehouse View can be used in place of list in Contains and Where Used tabs
- Graphical representation of file structure
- Three layouts available to provide right amount of content
- Thumbnail preview also available

Benefits

Quickly identify component of interest and perform SOLIDWORKS PDM commands directly from graphical representation of structure.

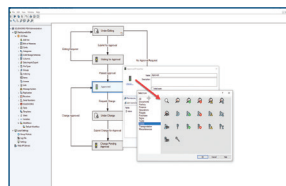


3 Web2 Data Card Enhancements*

- Data cards can be configured to fulfill Web2 user requirements
- Editing properties via flat or tree layout
- Multiple control types supported: Date Picker, Multiline box, radio and checkbox buttons

Benefits

Save significant amount of time on Web2 by quickly browsing through data card properties and updating values with modern controls.

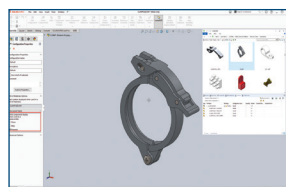


4 Workflow State and Transition Icons

- Available icons for workflow states and transitions significantly expanded
- Meaningful icons available to represent specific states or transitions

Benefits

Understand status of files quickly with colorful, meaningful icons.



5 SOLIDWORKS Bill of Materials Options

- SOLIDWORKS PDM supports all “Show,” “Hide” and “Promote” options used with SOLIDWORKS bill of materials

Benefits

Avoid need to create “named BOM” in order to align SOLIDWORKS CAD BOM and Data Management BOM. Reduce risk of mistakes and improve efficiency working with BOMs.

* Targeted for SOLIDWORKS 2021 SP2.0